

LIVE BETTER SOONER!

# PINNACLE

at Brandywine Farms

DESIGNER MODEL HOME FOR SALE



## THE PINNACLE HANCOCK MODEL

This is a **rare opportunity** to own a luxury designer home on a spacious 1/2 acre homesite in a coveted neighborhood – just steps from the Clubhouse and best-in-class amenities!

Move right in to this beautiful, fully-established community with minimal construction activity and a built-in neighborhood of friends.



### Homesite #37 | 502 Anthem Lane

★ Base Price including 2nd Level.....	\$670,900
★ Lot Premium.....	\$38,000
★ Options.....	\$621,544
★ Total Retail Price.....	<del>\$1,330,444</del>

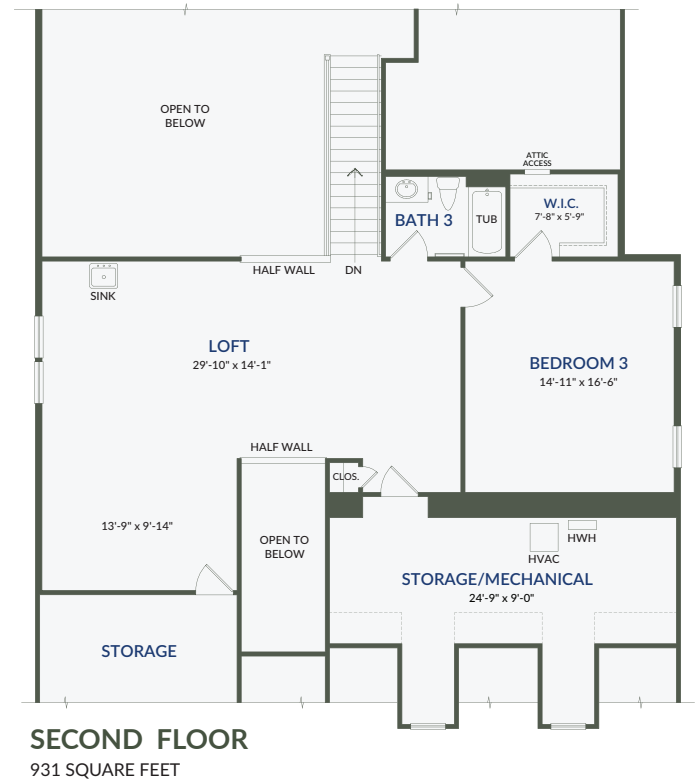
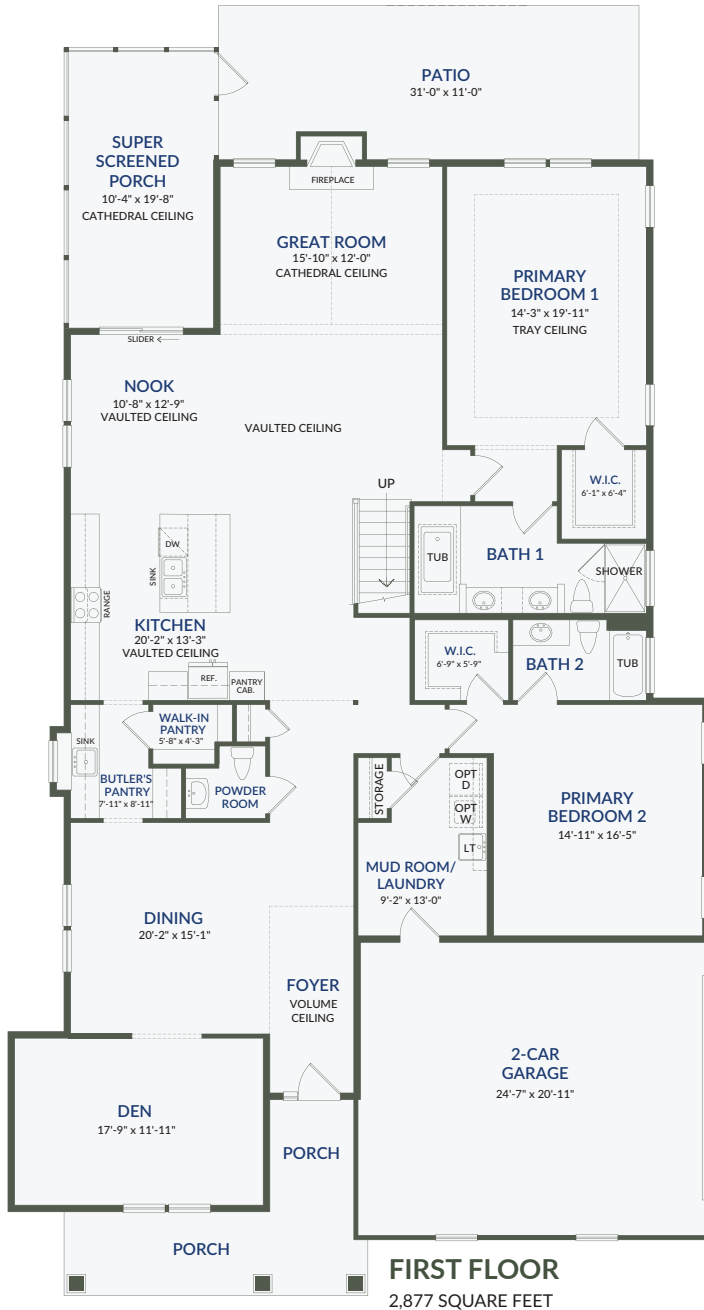
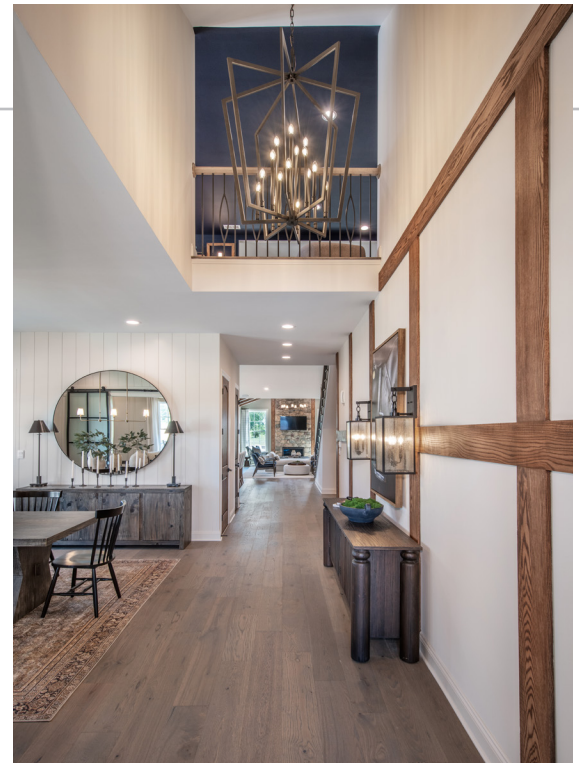
**Designer Model Special..... \$1,180,000**

*You Save Over \$150,000!*

# The Pinnacle Hancock Model

## Included Structural Selections:

- Desirable Craftsman Elevation Style with Covered Porch
- Super Screened Porch
- Expansive paver patio
- Cathedral Ceiling in Great Room with Stone Fireplace
- Gourmet Kitchen Layout
- Dual First Floor Primary Suites with Walk-in Closets
- Luxurious Soaking Tub in Primary Bath
- Expanded Second Level Loft with Bedroom, Bath, and Stylish Wet Bar



  
**PINNACLE**  
at Brandywine Farms

BrandywineFarms55.com | 610-708-1650 | 119 Loyal Lane, West Brandywine Township, PA 19320

For more information, please visit us at our Welcome Center at 119 Loyal Lane, West Brandywine Township, PA 19320. Subject to errors, omissions & changes. No additional discounts apply. Additional restrictions may apply. Furniture is not included in list price. See New Home Counselor for details. Updated 18MAY2026

