

WASHINGTON



WASHINGTON II • OPTIONAL CRAFTSMAN ELEVATION



WASHINGTON I
TRADITIONAL ELEVATION



WASHINGTON I
OPTIONAL FARMHOUSE ELEVATION



WASHINGTON I
OPTIONAL CLASSIC ELEVATION



WASHINGTON I
OPTIONAL CRAFTSMAN ELEVATION



WASHINGTON II
TRADITIONAL ELEVATION



WASHINGTON II
OPTIONAL FARMHOUSE ELEVATION

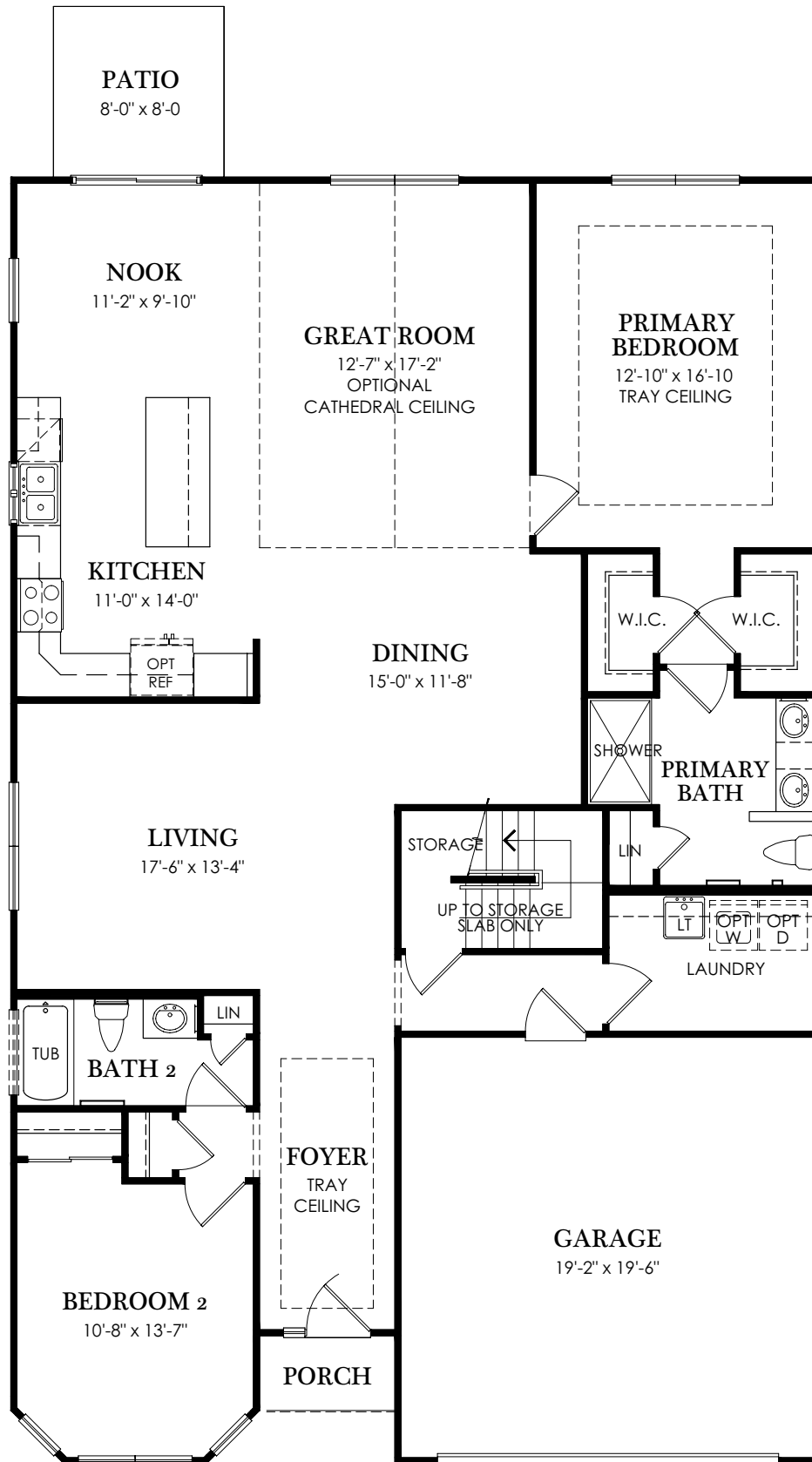


WASHINGTON II
OPTIONAL CLASSIC ELEVATION


TRADITIONS
OF AMERICA

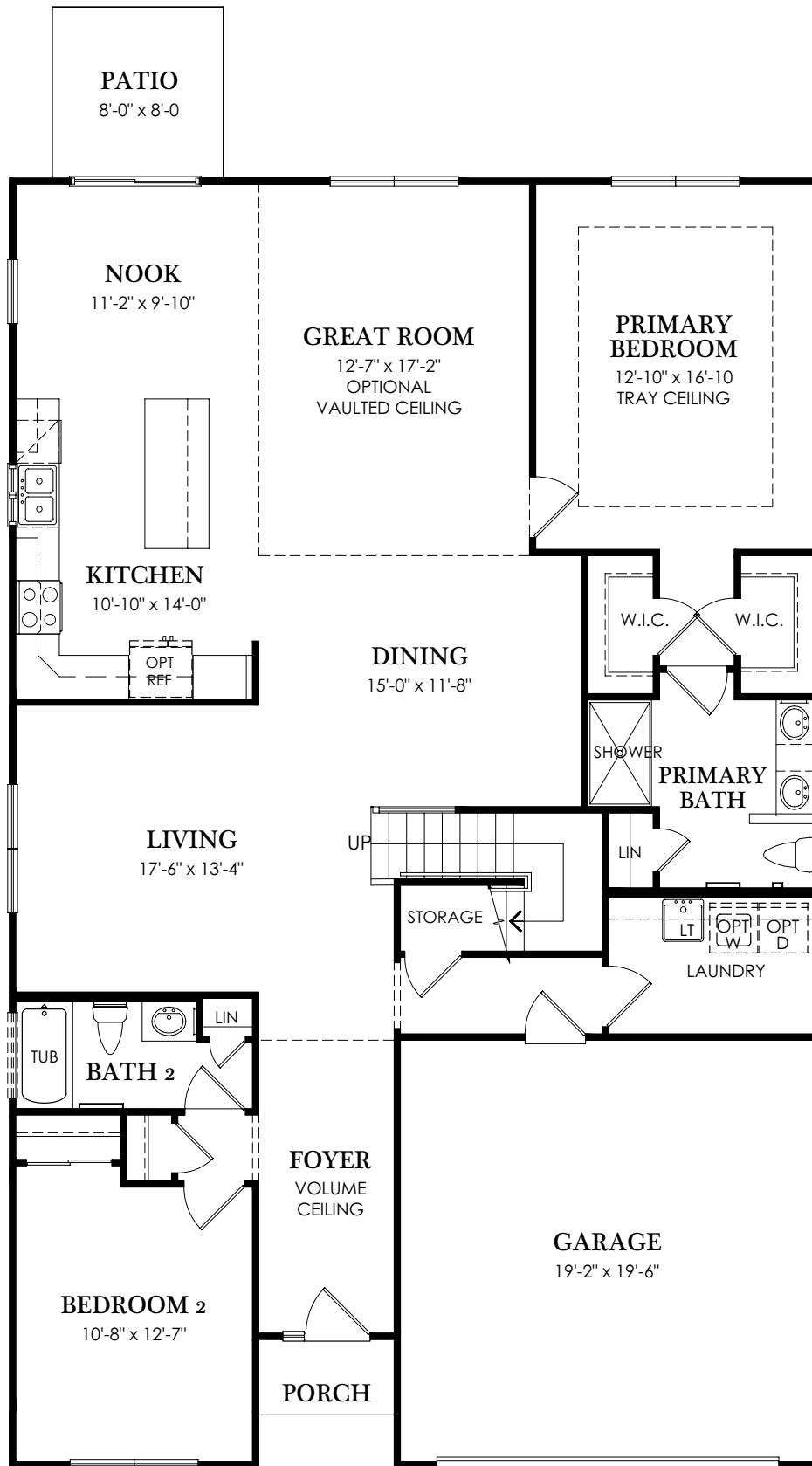
WASHINGTON I

FIRST FLOOR • ONE LEVEL • 1,798 SQUARE FEET



WASHINGTON II

FIRST FLOOR • TWO LEVEL • 1,859 SQUARE FEET



Optional Second Floor

SECOND FLOOR • 621 SQUARE FEET

